



## T1200 Advanced thermal Infrared imaging camera system



1024x768



5" LCD



60Hz



180°



1500°C

## T1200 Advanced HD Multi Sensor/Multi Function E0/IR Professional grade thermal infrared imaging camera system

Advanced HD radiometric thermal imaging camera with 60Hz refresh rate sensor

1024x768



Super pixel

**2048x1536**



HD Eyepiece and integrated  
HD 5" touchscreen

**-40°C- +650°C**

Temperature measurement range

Extended to **1500°C**

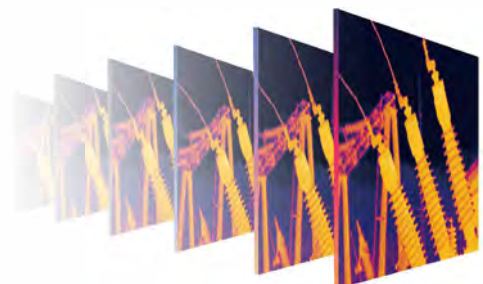
**10**

Movable points

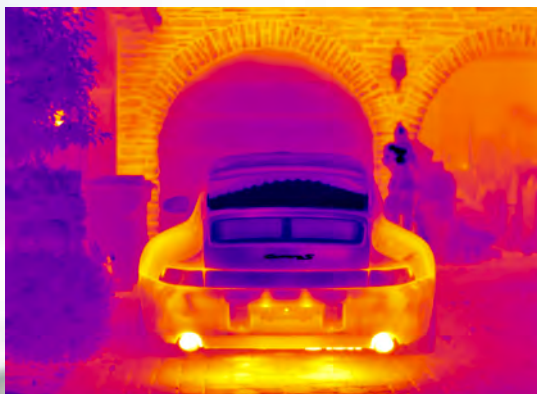
**10**

Movable areas

Multiple user friendly imaging and  
analysis features, including  
1-40x zoom







Suitable for power industry, scientific research, building diagnosis, electrical and mechanical testing, railway, steel and petrochemical, automation, and a wide variety of advanced applications

Rugged, easy to use, plug and play Advanced HD XGA thermal imaging camera system with all accessories and software included



## Specifications

Resolution	1024x768
FOV	28°
Display	5-inch color LCD capacitive touch screen
Focal	Automatic/manual focus/electric focus/touch screen
Frame rate	60Hz
Visual camera	5M pixels, CMOS module, built-in LED
Color palettes	11 types of mono/color palettes to choose from (including iron red, rainbow, black and white, black and white reverse, etc.)
Image display	Infrared or visible light full-screen switching, picture-in-picture, thermal superposition, dual-band fusion
Emissivity correction	The emissivity is adjustable from 0.01 to 1.0 (in increments of 0.01), or the emissivity can be corrected through a predefined material emissivity meter
Memory	Built-in 128G memory and external 32G SD card (expandable)
Working Temperature	-40°C~ +70°C
Encapsulation	IP54

## Contact us

**SPI CORP USA / [www.x20.org](http://www.x20.org)**  
**6620 S Tenaya Way #200**  
**Las Vegas NV 89113**



**702-499-9551 / [sales@x20.org](mailto:sales@x20.org)**